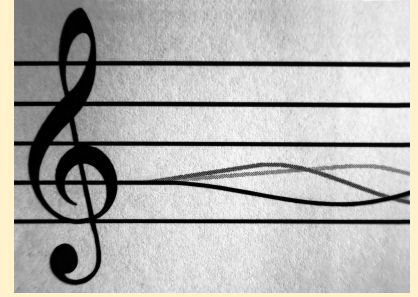




Arts/Wellness Department

Music Curriculum Grades 6-8



Norwell Public Schools' grade 6-8 music curriculum is aligned to the [Massachusetts Arts Curriculum Framework](#), last revised in 1999, through its performing ensemble courses - Chorus and Band - and through its non-performing component, General Music. To better address students' developmental needs, the performing ensemble courses are segmented by grade.

The music program at Norwell Middle School offers a wide range of rigorous coursework that addresses students at the developmental level specified by the Massachusetts Department of Elementary and Secondary Education as *by the end of grade 8*. The coursework is designed to prepare students to be lifelong musicians, intelligent consumers of music, and engaged, contributing members of their society. It is also designed to build upon the skills and sensibilities that students develop through their participation in general music and beginning band at the elementary level and to prepare students with the technical and expressive skills necessary to continue the study of music at the high school level.

The **Arts/Wellness Department** believes that musically proficient students should have the opportunity to engage meaningfully with music through the four processes summarized best by the 2016 [National Core Arts Anchor Standards](#).

Creating: Conceiving and developing new artistic ideas and work.

Performing: Realizing artistic ideas and work through interpretation and presentation.

Responding: Understanding and evaluating how the arts convey meaning.

Connecting: Relating artistic ideas and work with personal meaning and external context.

Grade 6

General Music
Grade 6 Chorus
Grade 6 Band

Grade 7

Grade 7-8 Chorus
Grade 7 Band

Grade 8

Grade 7-8 Chorus
Grade 8 Band

[1999 Massachusetts Arts Curriculum Framework](#)

[2016 National Core Arts Standards](#)

[Norwell Middle School Program of Studies](#) provides more detailed information about courses, expectations and opportunities.